

PURELY AFRICAN SAFARIS
IN CONJUNCTION WITH **RIZWANA SAFARI**

P R E S E N T S



SEVEN
SAFARIS
EDITION

Embark on a Unique Journey Through Uganda

LOCATION



Uganda is a landlocked country located in East Africa, bordered by Kenya to the east, Tanzania to the south, Rwanda to the southwest, South Sudan to the north, the Democratic Republic of the Congo to the west, and Lake Victoria to the southeast. Its geographical coordinates are approximately 1.3733° N latitude and 32.2903° E longitude. The diverse topography of Uganda includes expansive savannahs, lush rainforests, mist-covered mountains, and the Great Rift Valley. Renowned for its rich biodiversity and stunning landscapes, Uganda is often referred to as the "Pearl of Africa." The country's central location in the African continent and the equatorial climate contribute to its unique and varied ecosystems, making it a captivating destination for nature lovers and adventurers alike.

Discover Uganda: A Tapestry of Nature and Culture

Uganda, the "Pearl of Africa," invites you on an extraordinary journey through its diverse landscapes and rich cultural tapestry. From vast savannahs where lions roam to mist-covered mountains and dense rainforests echoing with chimpanzee calls, Uganda is a mosaic of natural wonders.

Encounter rare and majestic creatures in Bwindi Impenetrable National Park, witness the grace of elephants in Kidepo National Park, and track lions in Queen Elizabeth National Park. Uganda is an adventurer's playground, from the heights of Mount Elgon to cascading waterfalls.

Beyond nature, engage with vibrant communities, partake in traditional dances, and bask in the warmth of Ugandan hospitality. Protected landscapes reflect Uganda's commitment to conservation, ensuring a sustainable and unforgettable journey. Welcome to Uganda, where the allure of the wild and the embrace of its people create a lasting symphony of memories.

Discover the magic of Uganda's seven extraordinary national parks, each a unique sanctuary teeming with wildlife, stunning landscapes, and boundless adventure. Join us as we invite you to explore the untamed beauty and diverse wonders that await in:

- ▶ Queen Elizabeth National Park
- ▶ Lake Mburo National Park
- ▶ Kibale National Park
- ▶ Mt Elgon National Park
- ▶ Bwindi Impenetrable National Park
- ▶ Kidepo National Park
- ▶ Murchison Falls National Park



Queen Elizabeth National Park

01

Queen Elizabeth National Park is located in the western part of Uganda laying between lake Gorge and lake Albert with the kazinga channel. The park was named after the Queen of England in 1954 following her visit. Queen Elizabeth National Park is a home to over 618 bird species, 10 primates and 95 mammals including the BIG FIVE making it the most visited park and the 6th highest diversity in the world and highest in Africa. The park is easily accessible both on road and air.



Key areas and activities in Queen Elizabeth National Park

Game drives

The drives are most common activities in the park conducted in the morning and evenings giving tourists a chance to see different animals like lions, buffalos, hippos, elephants and many more.

Balloon safaris

This unique African balloon safaris adventure begins early morning giving you an aerial view of the park as you admire its unique terrain and thousands of animals and flora below.

Tree climbing lion's adventure

In the Ishasha sector, tourists flock the park to track the lions and enjoy an up-close encounter with these unique tree climbing lions and also observe their unique behaviors.

Nature walks at the Maragambo forest

Nature walks are organized in this large forest using established trails to learn about forest conservations while spotting crater lakes, birds, primates and more

Bird watching

With over 600 bird species, this makes the park the best bird watching paradise destination in Africa. Researchers take time in learning about these birds and nesting.

Boat cruise


Tourists enjoy a 2hrs boat cruise on the Kazinga channel as the guide teaches you the historical backgrounds of the place and as well water animals spotted at the banks like hippos, crocodiles, elephants, birds and more.

Cultural tours

Visit local traditionally harvest salt form lake Katwe, traditional homesteads and enjoy energetic dance performances by the locals.

Chimp tracking at kyambura gorge

Chimp tracking expeditions are conducted within the verdant forests of the park & you will get a chance to spend an hour on an up-close encounter with man's closest living relative

- 
1. Accommodations in the park ranges according to preferences, accessibility to the park and comfortability of the tourist.
 2. To cover all the activities in the park can approximately take 3 nights and 4 days
 3. An itinerary is drafted according to client preferences on how many parks he/she would love to cover and period of staying



Kibale National Park

Kibale National Park is located in the western part of Uganda and it borders Queen Elizabeth National Park in the south. The park is the premier chimp tracking destination in the country with over 1500 chimpanzees in Uganda

Key areas and activities in Kibale National Park

Chimp trekking

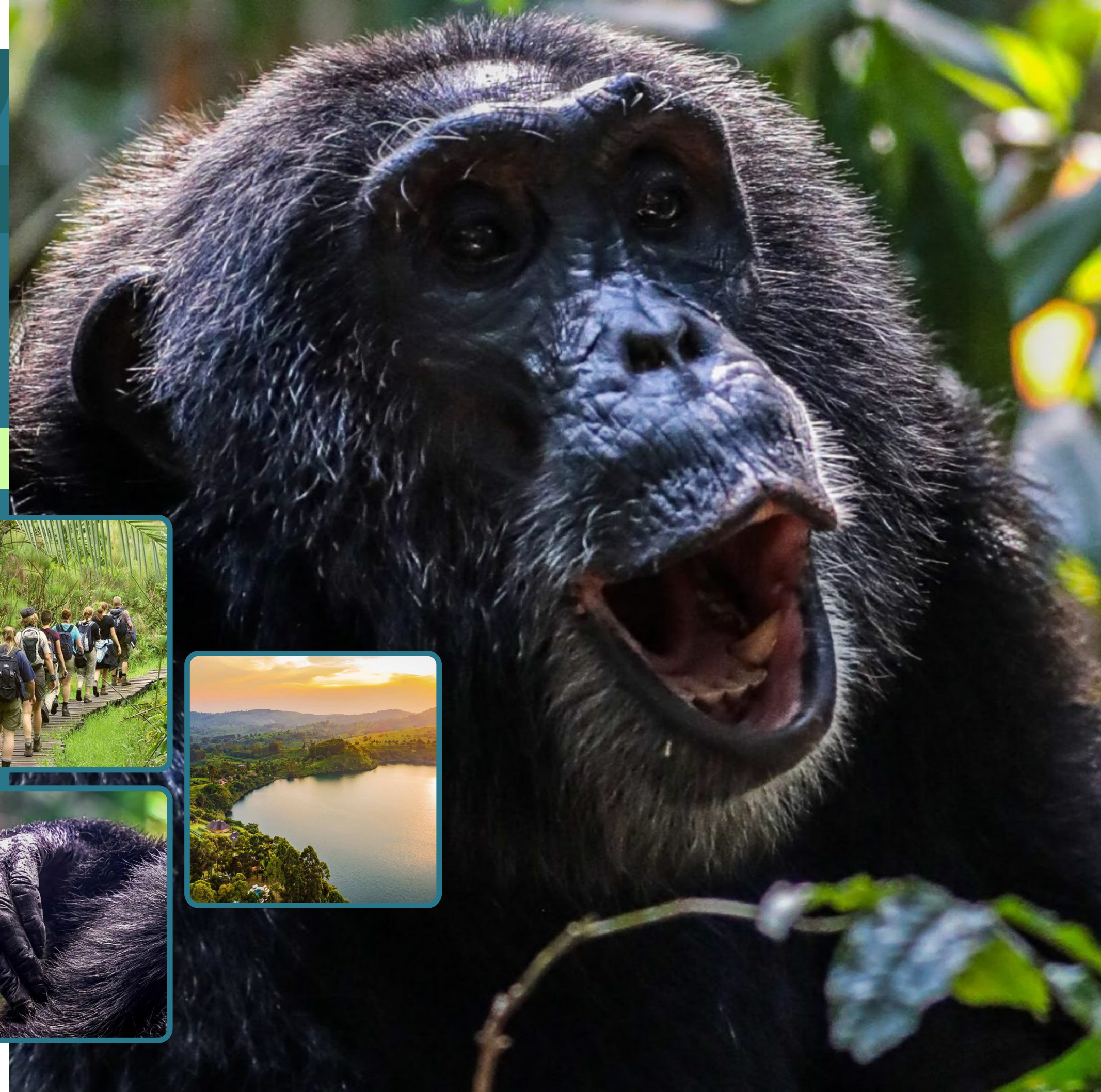
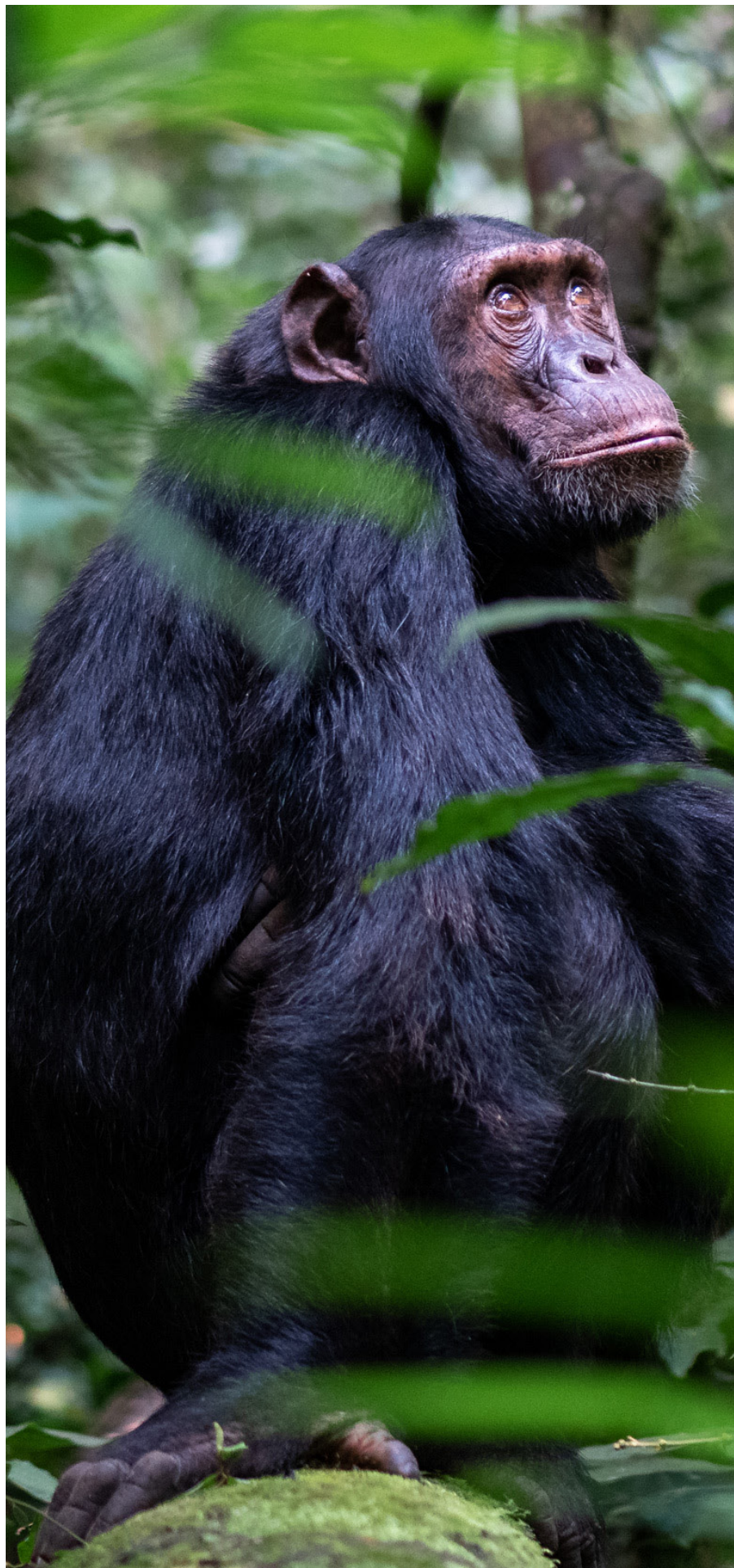
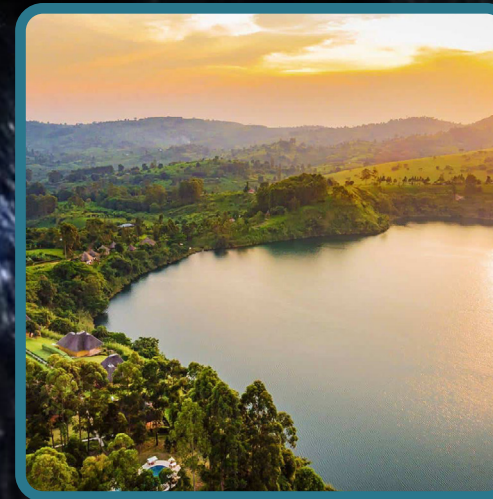
Chimp trekking ranks as the top safari activity in Kibale National Park. This memorable adventure is done in two sessions of the day. The morning session starts at 8:00am and the afternoon session starts at 2:00pm all taking 2-5 hrs

Chimpanzee habituation in Kibale forest

This activity is mainly carried out by researchers, doctors, rangers, and trackers. It often starts early morning with a briefing and then join a group of researchers and tour guides into the jungle. This activity gives you a golden opportunity to learn about chimp behaviors, gestations and breeding.

Crater lake tours

The Kibale park area consists of over 60 beautiful crater lakes believed to have formed as a result of volcanic eruptions. This scenery is just perfect for photoshoots. Among others, Lake Nyabikere, Lake Nyinambuga, Lake Nkuruba, Lake Kifuruka are usually the most visited.



Lake Mbuoro National Park

03

Lake Mbuoro National Park is the nearest national park in Uganda. The park has got a vast of ecosystem and nature prevails in its western region. The park as well harbors 68 mammal species though doesn't have lions and elephants. And on that fact of not having lions, it gives tourists a chance to come up-close to animals. The park has a wide range of birds flopping in the sky.



Key areas and activities in Lake Mbuoro National Park.



Horseback riding

Experiencing game from horse bark is a very special moment. Zebras come towards to check out the strange relative without stripes.

Boat trips
An afternoon boat cruise gives the best opportunity to see hippos and crocodiles, water birds are often too numerous for even the keenest birder to identify them all.



Game drives

The best way to explore the park to the fullest is by driving. This provides an opportunity to tourists seeing impala, zebras, and more on a close range. In Lake Mbuoro National Park, it's the only place to watch the great impala and Burchell's zebras.

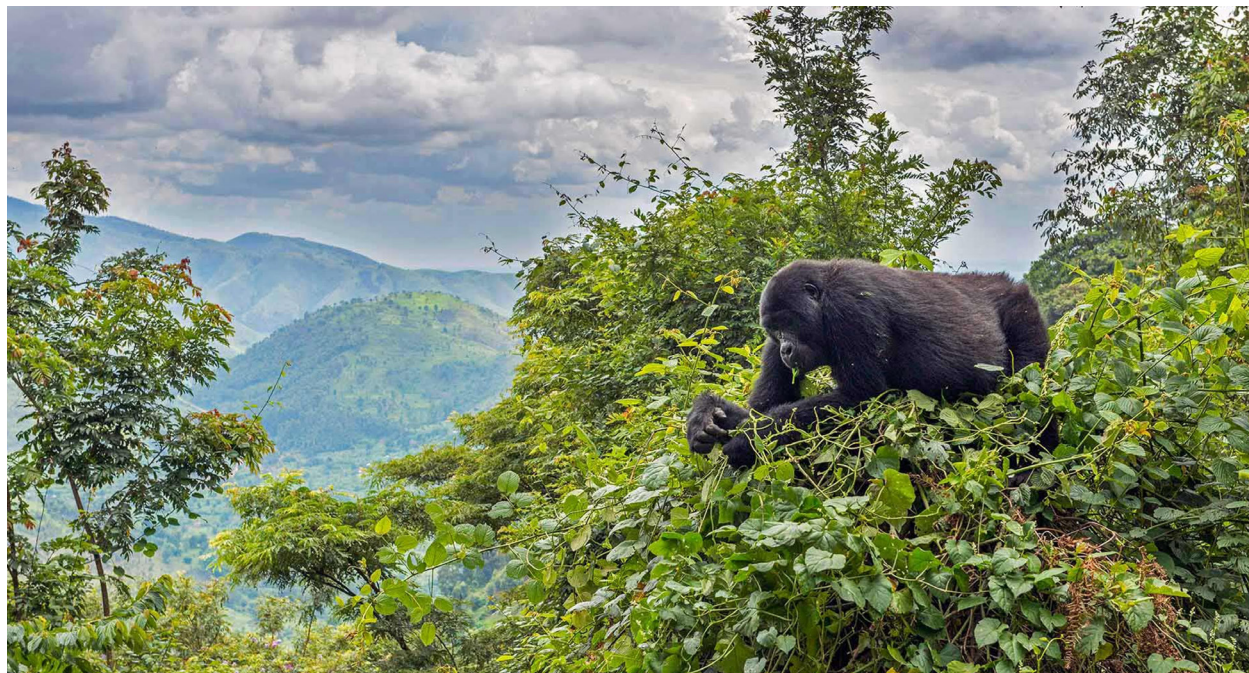


04

Bwindi Impenetrable National park

Bwindi impenetrable national park is located in the southern part of Uganda. Bwindi is a habitat to more than half the worlds population of mount Gorillas. The word "Bwindi" means "darkness" because of its thick impenetrable forests of over 400 varied plant species.

Gorilla trekking is the main activity carried out in Bwindi Impenetrable National Park and it can take days depending on the amount of time you want to spend with these human-like primates.



Key areas and activities in Bwindi Impenetrable National park

Bird watching and research

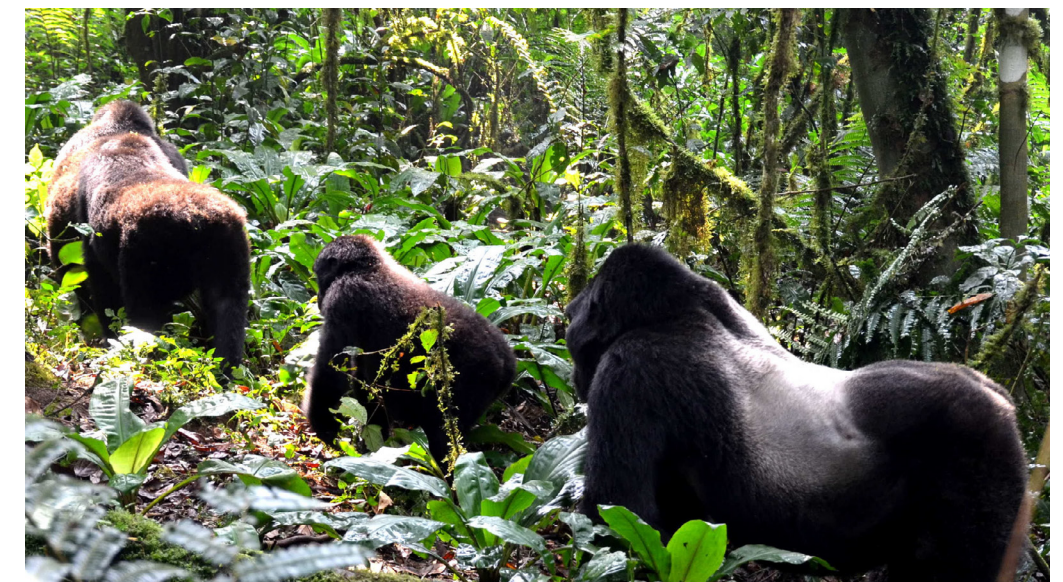
Bwindi Impenetrable Forest National Park is a home 350 bird species making it so far, the second-best place for bird watching in Uganda unique species of birds.

Nature walks

Nature walks in Bwindi take you though the verdant forest, and these are a number of routes to choose from depending on in forest, fitness and time constants

Butterfly spotting

For scientists & fans of the beauty of butterflies, Bwindi is a dream. The forest is the most important place in all of Africa for 'Montane Forest butterflies, hosting over 202 different butterfly species.





Mountain Elgon National park

Mountain Elgon National Park is located 140km northeast of Lake Victoria. The park is named after Mountain Elgon, an extinct shield volcano on the boarder of Uganda and Kenya.

Together with the fauna and flora, the park has a variety of scenery like cliffs, caves, waterfalls, hot springs, gorges, mesas and mountain peaks.

The lower slopes of the mountain are inhabited by elephants, buffalo and a variety of small antelopes.

The dense parts of the forest contain primates such as the black and white colobus monkey others.

The park is a home to over 300 species of birds.



Key activities in Mountain Elgon National Park

Hiking

Mountain Elgon's hiking trails are one of its major activities accessible throughout the year and it requires no specialists climbing equipment.

Mountain Biking

This is a fan activity for lovers. The park has biking trails making the hikes easier.

Bird watching

The park contains over 300 species of birds like the rare species of the endangered lammergeier, African blue fly-catcher, the African goshawk, and the cinnamon-chested bee eater.





Murchison fall National park

The park is located in northern Uganda northwards of capital Kampala, and extends its boundaries to a number of districts within and beyond the Bunyoro escarpments.
The park has more than 70 animal species, three quarters of the world population of Rothschild giraffes.

Key places and activities in Murchison Falls National Park

The Murchison falls

The falls offer a very breath-taking view worth enjoying large volumes water from the Victoria Nile forces its way through an 7m wide gorge to plunge 43mtrs below into a pool hence making a thunderous noise with a splashing cloud of fog.

Ziwa Rhino sanctuary

This is a non-profit project establish to revive the population of white Rhinos in Uganda following the intense poaching.

Game drives

These are conducted early morning and evenings offering you a chance to enjoy up-close view of the different animals.

Chimpanzee tracking

Cultural tours

Hot air balloon safari

Bird watching

Nature walks and hikes

And more



Kidepo Valley National Park

Kidepo Valley National Park is apparently the most isolated national park in Uganda but still stand out to be the most virgin places of every wild life viewer can ever visit. The park is a true gem with huge abundance in wild life. It remains a true rendition of tourism in Uganda but remains unknow to many. The park is as well named the third best national park in Africa



Game drive.

Kidepo Valley National Park is a popular Uganda safari game drive / viewing destination with a wide range of game. For better opportunities of spotting natural wild life species and interact with game when very active in the coldness of the morning, a 6:00am drive is ago. Travelers in Kidepo have opportunities to spot among others; lions, cheetahs, leopards, zebras, buffaloes, elephants, giraffes, striped, hyenas, Kobs and many others. Culture and nature walks
Birding experiences and more

GENERAL ENQUIRIES

+(256) 702 752 069

+(256) 706 812 464

purelyafricansafarisinc@gmail.com

info@rizwanasafaris.com



@PurelyAfrica1

@RizwanaSafaris

